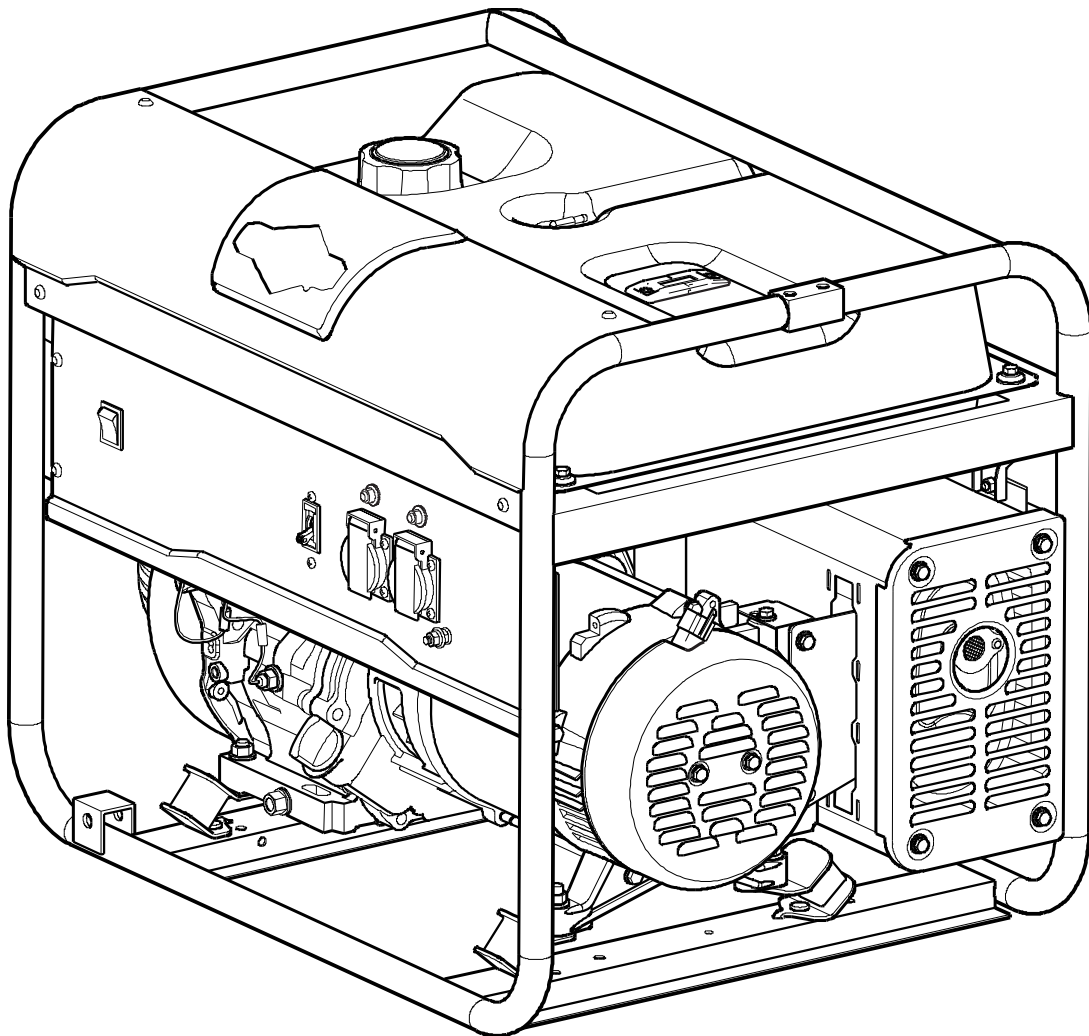




Illustrated Parts List

2200A



Products

Mfg. No.	Description
030671-00	2200A Briggs & Stratton

Manual Part No. 1759941

Revision -

Rev. Date: 7/20/2015

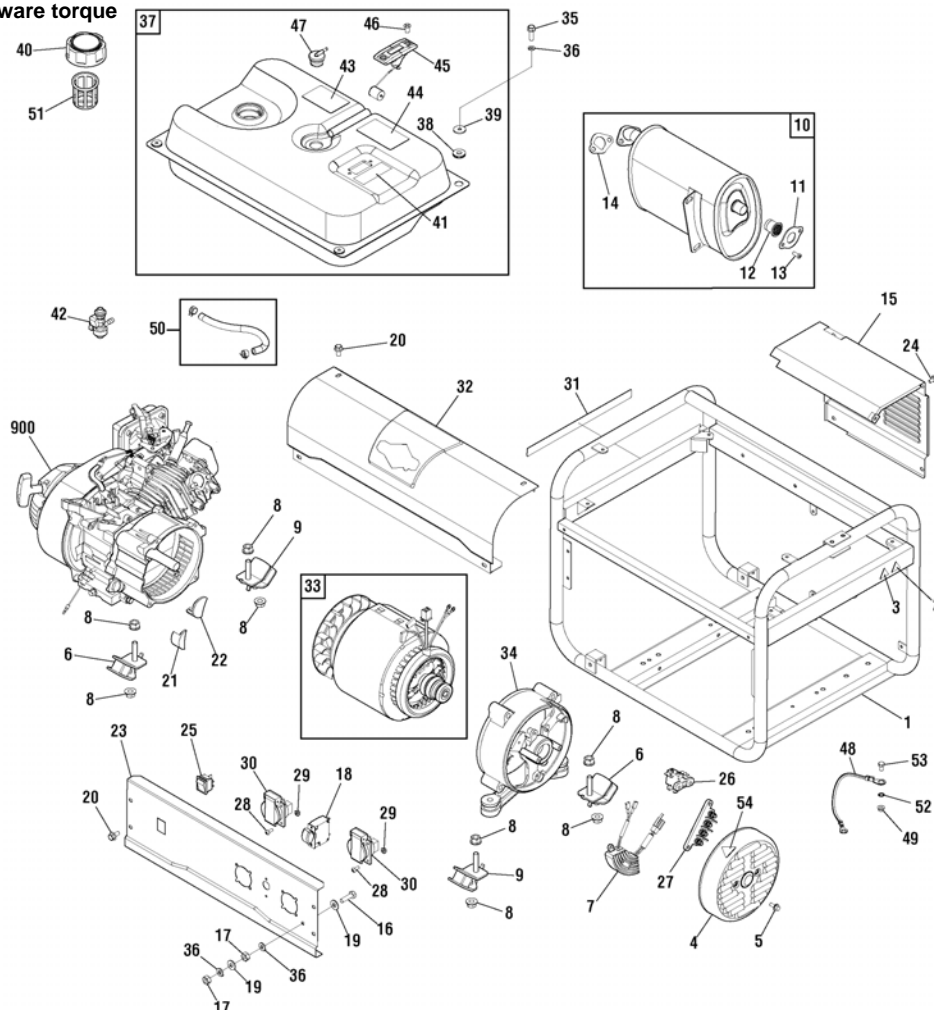
Not for
Reproduction

PRODUCT COMPONENTS	PAGES
Main Unit	4
Optional Accessory - Wheel Kit	6
Torque Specification Chart	Inside Back Cover

Not for
Reproduction

Main Unit

NOTE: Unless noted otherwise, use the standard hardware torque specification chart.



REF.	PART NO.	DESCRIPTION	REF.	PART NO.	DESCRIPTION
1	707894	CRADLE (Includes Ref. Nos. 2, 3 & 31)	18	707891	CIRCUIT-BREAKER
2	315635GS	DECAL	19	----	* WASHER, Flat, M6
3	315634GS	DECAL	20	708086	SCREW
4	704837	END COVER	21	705770	GUARD-RUBBER
5	----	* BOLT, M5 x 12	22	705769	GUARD-RUBBER
6	704888	MOUNT-VIBRATION	23	707890	PANEL-CONTROL
7	704912	VOLTAGE REGULATOR	24	----	* BOLT, M6 x 12
8	67989GS	NUT	25	704893	SWITCH
9	704889	MOUNT-VIBRATION	26	704914	BRUSH ASSY
10	704840	ASSY-MUFFLER	27	705783	TERMINAL BLOCK
11	704844	PLATE	28	----	* SCREW, M4 x 14
12	704846	SPARK ARRESTOR	29	----	* NUT, Flange, M4
13	----	* SCREW, M5 x 12	30	316585GS	OUTLET
14	704852	GASKET-MUFFLER	31	704880	DECAL
15	705774	COVER-MUFFLER	32	707889	SHROUD
16	----	* BOLT, M6 x 22	33	707896	ALTERNATOR
17	----	* NUT, M6			

Footnotes

* Items without part numbers are common fasteners and are available at your local hardware store.

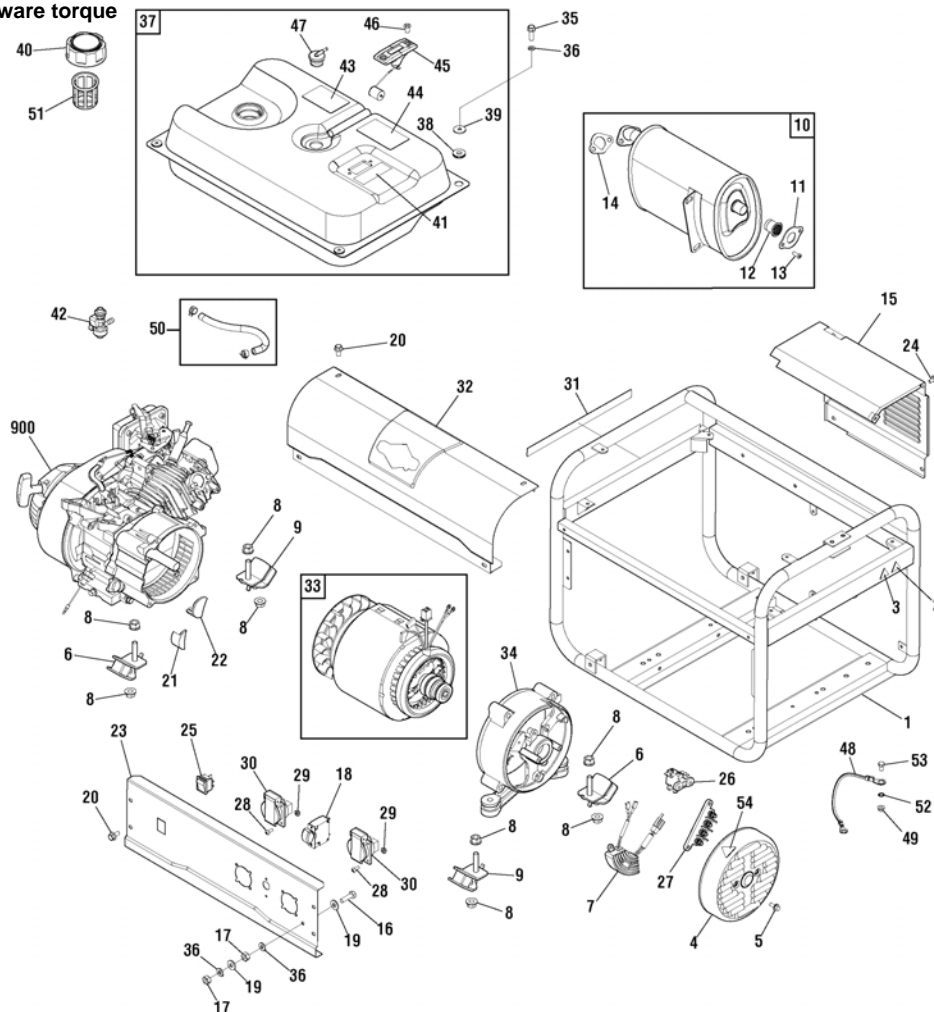
** Contact Engine Manufacturer

The above parts group applies to the following Mfg. Nos.:

030671-00 - 2200A Briggs & Stratton

Main Unit

NOTE: Unless noted otherwise, use the standard hardware torque specification chart.



REF.	PART NO.	DESCRIPTION	REF.	PART NO.	DESCRIPTION
34	704969	CARRIER-BEARING	51	704863	FILTER-FUEL
35	-----	* BOLT, M6 x 20	52	26850GS	WASHER
36	-----	* WASHER, Lock, M6	53	706152	BOLT
37	707895	TANK-FUEL	54	315636GS	DECAL
38	704861	MOUNT-VIBRATION	900	-----	** ENGINE
39	704862	WASHER			
40	704865	CAP-FUEL			
41	703264	DECAL			
42	310574GS	VALVE-FUEL			
43	708083	DECAL			
44	708085	DECAL			
45	704869	GAUGE-FUEL			
46	704866	SCREW			
47	704916	VALVE			
48	705633	WIRE			
49	52857GS	NUT			
50	791745	KIT-FUEL HOSE (Cut to Fit)			

Footnotes

* Items without part numbers are common fasteners and are available at your local hardware store.

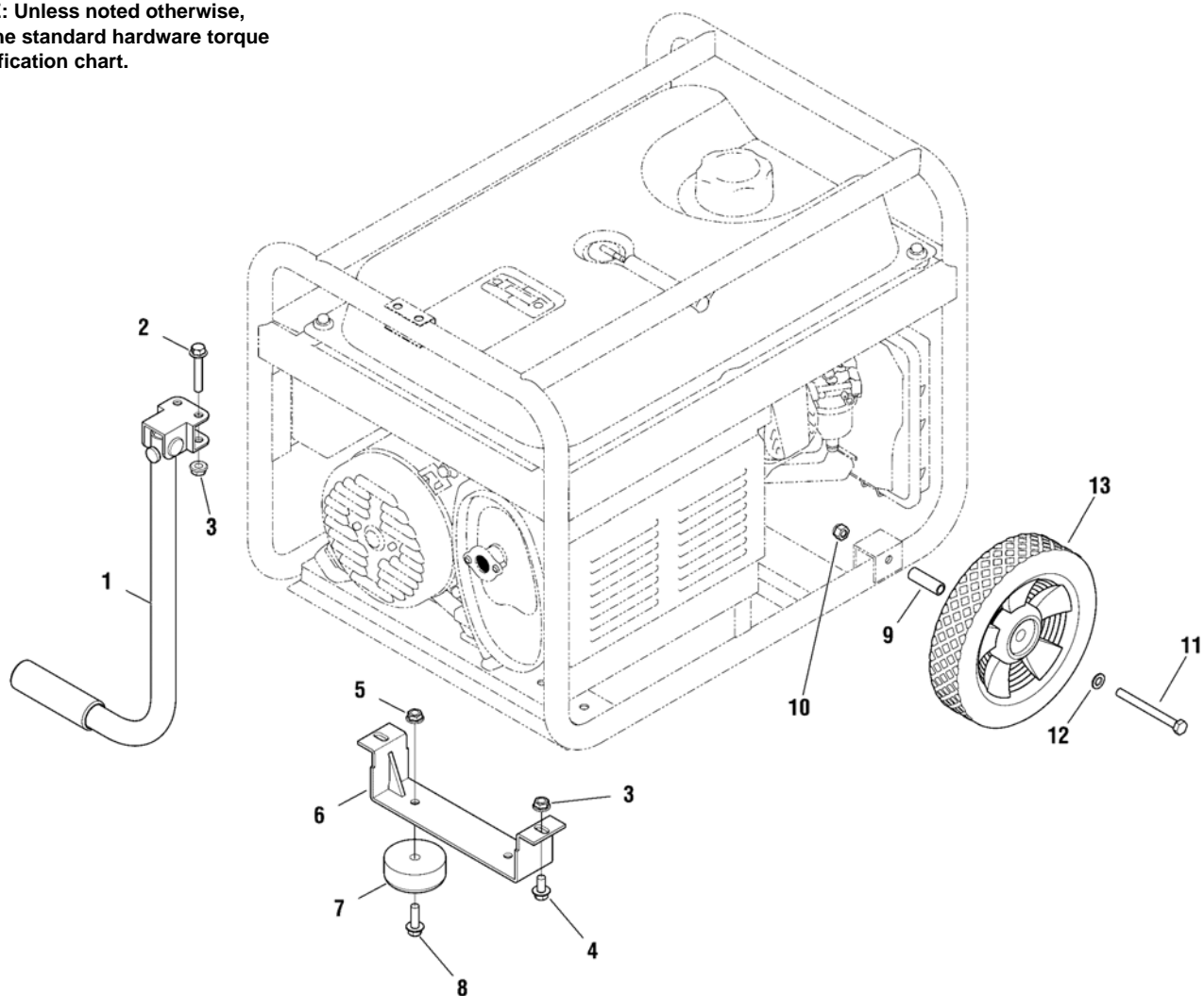
** Contact Engine Manufacturer

The above parts group applies to the following Mfg. Nos.:

030671-00 - 2200A Briggs & Stratton

Optional Accessory - Wheel Kit

NOTE: Unless noted otherwise, use the standard hardware torque specification chart.



REF.	PART NO.	DESCRIPTION	REF.	PART NO.	DESCRIPTION
1	705401	HANDLE ASSY			
2	----	* BOLT, M8 x 45			
3	----	* NUT, Flange, M8			
4	----	* BOLT, M8 x 16			
5	----	* NUT, Flange, M6			
6	705399	SUPPORT-LEG			
7	705400	MOUNT-RUBBER			
8	----	* BOLT, M6 x 25			
9	705394	SHAFT			
10	----	* NUT, Locking, M8			
11	705781	AXLE-BOLT			
12	----	* WASHER, Flat, M8			
13	705935	WHEEL			
--	705427	KIT-HARDWARE			

Footnotes

* Items without part numbers are common fasteners and are available at your local hardware store.

The above parts group applies to the following Mfg. Nos.:

030671-00 - 2200A Briggs & Stratton

Hardware Identification & Torque Specifications

Torque Specification Chart FOR STANDARD METRIC MACHINE HARDWARE (Tolerance ± 20%)								
Property Class	5.6 Class 5.6		8.8 Class 8.8		10.9 Class 10.9		12.9 Class 12.9	
	in/lbs ft/lbs	Nm.	in/lbs ft/lbs	Nm.	in/lbs ft/lbs	Nm.	in/lbs ft/lbs	Nm.
M3	5.88	.56	13.44	1.28	19.2	1.80	22.92	2.15
M4	13.44	1.28	30.72	2.90	43.44	4.10	52.56	4.95
M5	26.4	2.50	60.96	5.75	5.97	8.10	7.15	9.7
M6	44.64	4.3	7.3	9.9	10.3	14	12.1	16.5
M7	5.2	7.1	12.1	16.5	16.9	23	19.9	27
M8	7.7	10.5	17.7	24	25	34	29	40
M10	15	21	35	48	50	67	59	81
M12	26	36	61	83	86.2	117	103	140
M14	42	58	101	132	136	185	162	220
M16	64	88	147	200	210	285	250	340
M18	89	121	202	275	287	390	346	470
M20	126	171	290	390	405	550	486	660
M22	169	230	390	530	559	745	656	890
M24	217	295	497	375	708	960	840	1140
M27	320	435	733	995	1032	1400	1239	1680
M30	435	590	995	1350	1401	1900	1681	2280
M33	590	800	1349	1830	1902	2580	2278	3090
M36	759	1030	1740	2360	2441	3310	2935	3980
M39	988	1340	2249	3050	3163	4290	3798	5150

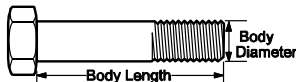
The guides and ruler furnished below are designed to help you select the appropriate hardware.



Nut, M8

Thread Diameter (mm)
Inside Diameter (in)
Threads per inch

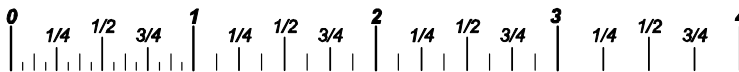
Nut, 1/2-16



Screw, M8- 1.25 x 25

Thread Diameter (mm)
Body Diameter
Distance between threads (mm)
Threads per inch
Body Length (mm)
Body Length (in)

Screw, 1/2- 16 x 2



Standard Hardware Sizing

When a washer or nut is identified as 1/2" (M8), this is the *Nominal size*, meaning the *inside diameter* is 1/2 inch (8mm metric thread diameter); if a second number is present it represents the *threads per inch* (distance between threads).

When bolt or capscrew is identified as 1/2 - 16 x 2" (M8 - 1.25 x 50), this means the *Nominal size*, or body diameter is 1/2 inch (8mm metric thread diameter), the second number, 16, represents the *threads per inch*, (*distance between threads*). The final number is the body length of the bolt or screw, 2 inches (50mm).

Torque Specification Chart FOR STANDARD MACHINE HARDWARE (Tolerance ± 20%)						
Hardware Grade	No Marks SAE Grade 2		SAE Grade 5		SAE Grade 8	
	in/lbs ft/lbs	Nm.	in/lbs ft/lbs	Nm.	in/lbs ft/lbs	Nm.
8-32	19	2.1	30	3.4	41	4.6
8-36	20	2.3	31	3.5	43	4.9
10-24	27	3.1	43	4.9	60	6.8
10-32	31	3.5	49	5.5	68	7.7
1/4-20	66	7.6	8	10.9	12	16.3
1/4-28	76	8.6	10	13.6	14	19.0
5/16-18	11	15.0	17	23.1	25	34.0
5/16-24	12	16.3	19	25.8	29	34.0
3/8-16	20	27.2	30	40.8	45	61.2
3/8-24	23	31.3	35	47.6	50	68.0
7/16-14	30	40.8	50	68.0	70	95.2
7/16-20	35	47.6	55	74.8	80	108.8
1/2-13	50	68.0	75	102.0	110	149.6
1/2-20	55	74.8	90	122.4	120	163.2
9/16-12	65	88.4	110	149.6	150	204.0
9/16-18	75	102.0	120	163.2	170	231.2
5/8-11	90	122.4	150	204.0	220	299.2
5/8-18	100	136	180	244.8	240	326.4
3/4-10	160	217.6	260	353.6	386	525.0
3/4-16	180	244.8	300	408.0	420	571.2
7/8-9	140	190.4	400	544.0	600	816.0
7/8-14	155	210.8	440	598.4	660	897.6
1-8	220	299.2	580	788.8	900	1,244.0
1-12	240	326.4	640	870.4	1,000	1,360.0

NOTES

- These torque values are to be used for all hardware excluding: locknuts, self-tapping screws, thread forming screws, sheet metal screws and socket head setscrews.
- Recommended seating torque values for locknuts:
 - for prevailing torque locknuts - use 65% of grade 5 torques.
 - for flange whizlock nuts and screws - use 135% of grade 5 torques.
- Unless otherwise noted on assembly drawings, all torque values must meet this specification.

Common Hardware Types

Hex Head Capscrew



Washer



Lockwasher

Carriage Bolt



Hex Nut

Wrench & Fastener Size Guide

1/4" Bolt or Nut Wrench—7/16"	5/16" Bolt or Nut Wrench—1/2"	3/8" Bolt or Nut Wrench—9/16"	7/16" Bolt or Nut Wrench (Bolt)—5/8" Wrench (Nut)—11/16"	1/2" Bolt or Nut Wrench—3/4"
M6 Bolt or Nut Wrench—10mm	M8 Bolt or Nut Wrench—13mm	M10 Bolt or Nut Wrench—17mm	M12 Bolt or Nut Wrench—19mm	M14 Bolt or Nut Wrench—22mm



Not for
Reproduction

Briggs & Stratton Power Products Group

Copyright© 2015 Briggs & Stratton Power Products Group. All rights reserved. No part of this page can be reproduced or transmitted in any form by any means without the express written permission of Briggs & Stratton Power Products Group.